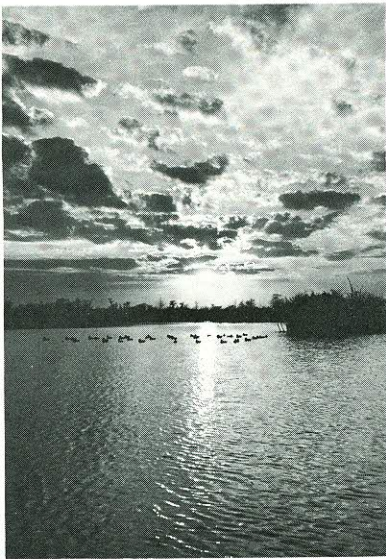


Vol. 18 Nos. 11 & 12
November-December
1966

Conservation Pledge

I give my
pledge as an American
to save and faithfully to
defend from waste the
natural resources of
my country—its soil
and minerals, its
forests, waters
and wildlife

*Published Bi-Monthly
in the interest of conser-
vation of Louisiana's nat-
ural resources by the
Wild Life and Fisheries
Commission, 400 Royal
Street, New Orleans, Lou-
isiana, 70130.*



Waterfowling in Louisiana is a popular sport for an estimated 90,000 duck and goose hunters. Louisiana winters approximately 20 per cent of the continental waterfowl population. Its lush marshes are home for millions of ducks, geese and coots. Shooting hours this year are from one half hour before sunrise to sunset. This is a typical scene in a Louisiana marsh just at sunrise. It's the sort of picture that sets the pulses of waterfowlers tingling with anticipation. (Cover photo by Joe Herring.)

LOUISIANA Conservationist

LOUISIANA WILD LIFE AND FISHERIES COMMISSION

*Subscription Free to Louisiana Residents
Upon Written Request*

JOHN J. McKEITHEN
Governor

DR. LESLIE L. GLASGOW
Director



L. S. ST. AMANT
Asst. Director

R. K. YANCEY
Asst. Director

LOUISIANA CONSERVATIONIST

STEVE HARMON Editor
McFADDEN DUFFY Staff Writer
EDNARD WALDO Staff Writer
ROBERT DENNIE Photographer

LOUISIANA WILD LIFE AND FISHERIES COMMISSION

JIMMIE THOMPSON, *Chairman* Alexandria
H. B. FAIRCHILD, *Vice Chairman* Sunshine
A. J. BUQUET Houma
JERRY G. JONES Cameron
JOHN E. KYLE, JR., Berwick
HOBSON NORRIS West Monroe
H. CLAY WRIGHT Evergreen

DIVISION CHIEFS

STEVE HARMON Education & Publicity	JOE L. HERRING Fish and Game
TED O'NEIL Fur Division	ALLAN ENSMINGER Refuge Division
ROBERT LAFLEUR Water Pollution Control	CHARLES R. SHAW Pittman-Robertson Coordinator
TED FORD Oyster, Water Bottoms and Seafood	HARRY SCHAFFER Dingell-Johnson Coordinator
	LARRY COOK Chief Accountant



Permission to reprint material in this publication will be granted provided that it is not used for advertising or commercial purposes and provided that proper credit is given. Contributions and photographs are welcome, but LOUISIANA CONSERVATIONIST cannot be responsible for loss or damage to unsolicited material. Manuscripts should be addressed to Editor, LOUISIANA CONSERVATIONIST, Wild Life & Fisheries Building, 400 Royal St., New Orleans, La. 70130.

Second-Class Postage Paid at New Orleans, Louisiana.

