

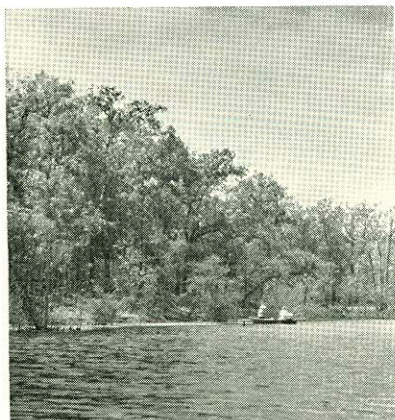
Vol. 16 Nos. 11 & 12

Nov.-Dec., 1964

Conservation Pledge

I give my
pledge as an American
to save and faithfully to
defend from waste the
natural resources of
my country—its soil
and minerals, its
forests, waters
and wildlife

*Published Bi-Monthly
in the interest of conser-
vation of Louisiana's nat-
ural resources by the
Wild Life and Fisheries
Commission, 400 Royal
Street, New Orleans, Lou-
isiana, 70130.*



At the August meeting of the Louisiana Wild Life and Fisheries Commission, a resolution was passed exercising an option on slightly over 10,000 additional acres bordering the Saline Wildlife Management Area in Catahoula and LaSalle Parishes. This brings the total acreage to slightly over 60,000 acres and extends the new management area to the Saline Bayou-Larto Lake complex, providing sportsmen with one of the finest hunting and fishing areas to be found in Louisiana. The cover photograph shows anglers fishing in Saline Bayou in that portion of the new acreage acquired by the Commission.
(Commission Photo By Bob Dennie)

LOUISIANA Conservationist

LOUISIANA WILD LIFE AND FISHERIES COMMISSION

Subscription Free to Louisiana Residents
Upon Written Request

JOHN J. McKEITHEN
Governor

J. D. HAIR, JR.
Director



R. K. YANCEY
Asst. Director

LOUISIANA CONSERVATIONIST

STEVE HARMON Editor
McFADDEN DUFFY Staff Writer
EDNARD WALDO Staff Writer
ROBERT DENNIE Photographer

LOUISIANA WILD LIFE AND FISHERIES COMMISSION

RAY WHATLEY, *Chairman* Alexandria
JOHN E. KYLE, JR., *Vice Chairman* Berwick
A. J. BUQUET Houma
JOHN P. CRAIN Grand Chenier
H. B. FAIRCHILD Sunshine
JIMMIE THOMPSON Alexandria
H. CLAY WRIGHT Evergreen

DIVISION CHIEFS

STEVE HARMON
Chief, Education & Publicity

JOE L. HERRING
Chief, Fish and Game

JULIUS L. BOOK
Chief, Law Enforcement

ALLAN ENSMINGER
Chief, Refuge

TED O'NEIL
Chief, Fur Division

CHARLES R. SHAW
Pittman-Robertson Coordinator

ROBERT LAFLEUR
Chief, Water Pollution Control

HARRY SCHAFFER
Dingell-Johnson Coordinator

LYLE S. ST. AMANT
Chief, Oysters, Water Bottoms and Seafood



Permission to reprint material in this publication will be granted provided that it is not used for advertising or commercial purposes and provided that proper credit is given. Contributions and photographs are welcome, but LOUISIANA CONSERVATIONIST cannot be responsible for loss or damage to unsolicited material. Manuscripts should be addressed to Editor, LOUISIANA CONSERVATIONIST, Wild Life & Fisheries Building, 400 Royal St., New Orleans, La. 70130.

Entered as second class matter August 21, 1947, at the Post Office at New Orleans, La., under the act of August 24, 1912.

